



DISCOVER SABI SAND GAME RESERVE

# & Beyond Kirkman's Kamp

Located high on a ridge, overlooking the magnificent Sand River, lies a lodge with a rich history and a safari experience like no other in the world.



DISCOVER THE SABI SAND GAME RESERVE  
& Beyond Kirkman's Kamp

# Why stay?

**1 WORLD CLASS LOCATION**  
The Sabi Sand Game Reserve is one of the most prestigious wildlife sanctuaries in the world, with unfenced borders neighbouring the Kruger National Park, and is famed for its leopards and incredible wildlife. The uniqueness of the lodge is its ideal positioning on the Sand River with exclusive access to the riverbed.

**2 BIG FIVE WILDLIFE**  
In addition to incredible leopard viewing, and the famous Big Five, discover a vast variety of plant and animal species that share 2 million hectares of land with the Kruger National Park. Encounter a few of the over 500 bird species, 145 animal species, 110 reptile species and 45 fish species, that call this vast landscape home.

**3 TRAVERSING RIGHTS**  
Kirkman's Kamp has exclusive traversing rights on 10,500 hectares (26,000 acre) of wilderness land, which means our guests can explore the reserve on foot, free from the constraints of roads and vehicles, go on a night drive, or sensitively go off-road enabling you to get closer to wildlife.

**4 FAMILY FRIENDLY**  
Kirkman's Kamp welcomes families and offers an incredible, fun-filled WILDchild experience, including croquet and cricket on the lawns, a game of tennis and cookie baking. The variety of children's activities tie in with the particular environment, as well as the local heritage and culture of the region.



**It's the most magical place I have ever been (honestly)! We were totally blown away with the lodge and the destination. ”**

DISCOVER THE SABI SAND GAME RESERVE  
& Beyond Kirkman's Kamp

# Lodge amenities



1

## SWIMMING POOL

The sparkling rim flow swimming pool is incredibly inviting in the lowveld heat. Boasting fantastic views over the river, this is the perfect place not only to refresh, but to enjoy delectable meals and cocktails.

---



2

## SAFARI SHOP

The signature Safari Shop boasts a range of quality, handpicked crafts and fashion wear showcasing the very best facets of the region, including stunning jewellery designed and fashioned by artisans from the local community, who draw on ethnic styles and motifs.

---



3

## TENNIS COURT

Enjoy a friendly game of tennis played on the very court that was originally opened by legendary tennis player Billie Jean King.

---



4

## SAFARI ACCESSORIES

Each cottage comes with a complimentary pair of Swarovski Optik CL Companion 8x30 binoculars, for your use throughout your stay, as well as a take-home Guides' Journal featuring wildlife checklists and maps.

---



5

## SAFARI SHOP

The signature Safari Shop boasts a range of quality, handpicked crafts and fashion wear showcasing the very best facets of the region, including stunning jewellery designed and fashioned by artisans from the local community, who draw on ethnic styles and motifs.

---



DISCOVER THE SABI SAND GAME RESERVE  
& Beyond Kirkman's Kamp

# Lodge amenities



## 6

### BOMA

After your evening game drive, enjoy a pan-African al-fresco dinner under the stars and around the open blazing fire in the lodge's traditional boma.



## 7

### IN-ROOM WELLNESS

Try out the complimentary Gym-in-a-Basket, or enjoy a relaxing massage treatment with natural Healing Earth products in the comfort and privacy of your private deck.



## 8

### LIBRARY

The library offers a sanctuary filled with interesting reads, while the classical sitting room provides the perfect setting to enjoy a cup of tea and board game.



## 9

### PERSONAL BARS

Your cottage boasts a private mini-bar and coffee station, to be enjoyed during the quiet moments in your room.

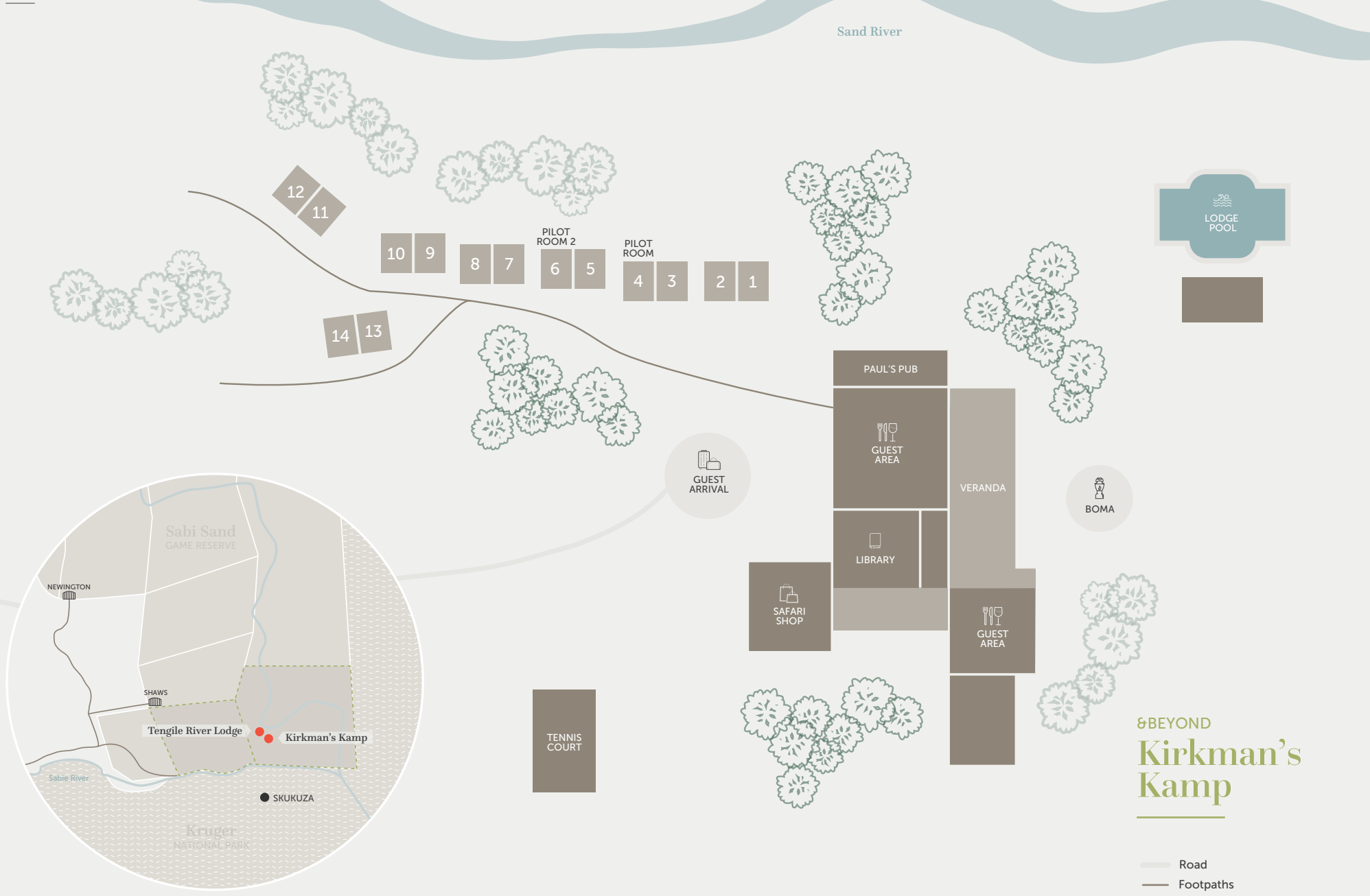


## 10

### DINING LOCATIONS

Enjoy your meals in a variety of alfresco locations such as the outdoor boma area, the lush lawn overlooking the river, the swimming pool or the privacy of your room.

# DISCOVER THE SABI SAND GAME RESERVE &Beyond Kirkman's Kamp Layout



&BEYOND  
**Kirkman's  
Kamp**

DISCOVER THE SABI SAND GAME RESERVE  
&Beyond Kirkman's Kamp

# Lodge overview

## LODGE

Maximum number of guests	25
Number of rooms	12
Family accommodation	1 triple room (children 16 years and younger)
WILDchild programme	Yes
Pilot / Guide accomodation	Available
Room types	12 cottages
Distance between rooms	3-6 metres between cottages. Each cottage is adjoined to 1 other cottage.
Check in / Check out times	14h00 / 10h00
Lodge closure	Open year round

## DINING

Food / Dietary options	Kosher and halaal available at an additional cost and with at least 4 weeks notice.
Private butler service	Yes
Plated service	Yes
Private dining	Yes

## PAYMENT TYPES ACCEPTED

Credit cards accepted	Visa, Diners, Amex, MasterCard
Currency	All major currencies accepted

## FACILITIES

Power	220v AC
Internet access	Yes, Wi-Fi in suites and guest area
Wine store or cellar	Wine store
Boma	Yes
Bar	Yes
Interactive kitchen	No
Swimming pool	Yes - lodge swimming pool
Wellness offering	Healing Earth treatments offered in-room
Fitness	Gym-in-a-basket available
Conference facilities	No
Weddings & blessings	Yes
Wheelchair access	Yes, with assistance, but not recommended
Complimentary laundry service	Yes
&Beyond Safari Shop	Yes

## OTHER

Vehicle type	9 seater open safari vehicle (Max 6 guests per vehicle)
Private 4x4 safari vehicle	Yes, depending on availability and at additional cost

DISCOVER THE SABI SAND GAME RESERVE  
& Beyond Kirkman's Kamp

# Inclusions

## RATE INCLUDES

Accommodation	✓
Three meals daily	✓
Soft drinks, house wines, local brand spirits and beers, teas and coffees and refreshments on game drives	✓
Laundry	✓
Safari activities	✓
One hour nature walks accompanied by experienced armed trackers (subject to availability)	✓
Emergency medical evacuation insurance	✓
VAT	✓
Transfers to and from Skukuza Airport	✓
A complimentary pair of Swarovski Optik binoculars per room for use during your stay	✓

## RATE EXCLUDES

Administration fee	✗
Telephone calls	✗
Safari shop purchases	✗
Gratuities	✗
All items of a personal nature	✗
Champagne, cognacs, fine wines, premium brand spirits and cigars	✗
Government bed levy	✗
Conservancy or park fees	✗
Landing fees	✗

**NOTE: Unmanned Aerial Vehicles:** Please be advised that the use of unmanned aerial vehicles (drones) are prohibited in the conservation areas we manage, until such time as their impact on wildlife and anti-poaching initiatives can be assessed. This rule will apply throughout Africa, as our partners in various countries and regions have adopted a similar stance.





DISCOVER THE SABI SAND GAME RESERVE  
&Beyond Kirkman's Kamp

# WILDchild

&Beyond Kirkman's Kamp offers a range of fascinating and entertaining activities for children aged 3–12 years, bringing alive the magic of Africa. Whilst on a family safari, you can rest assured that your children will always be safe and well cared for (both on and off game drives). Every minute is supervised by our guides and lodge staff, who provide hours of amusement and invaluable information to the children in their care.

## WHY WE LOVE &BEYOND'S FAMILY SAFARIS

- Special WILDchild programme for children aged 3–12 years
- Each WILDchild receives a backpack filled with age-appropriate goodies
- Activities are seasonal and include bark rubbing, bug collecting, frog safaris, 'poo walks', baking with the chef and more
- Special children's menus available

## CHILD POLICY\*

0 – 6 years	Not permitted on game drive
6 – 12 years	Permitted on game drives at ranger's discretion. Not permitted on walks outside of the lodge grounds
12 – 16 years	Permitted on game drives and nature walks Not permitted on Specialist Walking Safaris

*\*The child policy applies to children participating on game drives with a private vehicle only. Children that share a vehicle with other guests not in their party, may be subject to activities only at the lodge manager's discretion.*

**Please note:** The lodge is not fenced off and children are required to have an adult accompanying them at all times.



The experiences of WILDchild were such fun and so informative. It's quite impossible to think of when the children last had such fun on vacation. ”



A male lion with a thick, golden-brown mane stands in the foreground, looking towards the camera. He is positioned on a sandy bank next to a small body of water. In the background, a green safari vehicle is parked on a dirt path, with several people seated inside. The scene is set in a lush, green savanna environment with tall grasses and a clear sky.

DISCOVER THE SABI SAND GAME RESERVE

# Adventures of a lifetime

Encounter iconic wildlife on an &Beyond African safari, and enjoy an array of private and specialist experiences.



## DISCOVER THE SABI SAND GAME RESERVE

Adventures of a lifetime

# Experiences and highlights

In between your twice-daily game drives, why not take a nature walk with your guide, or indulge in a luxurious wellness treatment.



# 1

### BIG FIVE GAME DRIVE

Enjoy twice-daily game drives that set off early in the morning or late in the afternoon (continuing after nightfall) in the company of expert safari guides and local trackers who will do their best to ensure that all your wishes are met. In addition to the Big Five (lion, leopard, rhino, elephant and buffalo), each safari features an iconic set of wildlife and an opportunity to encounter the famous Sabi Sand leopard.

# 2

### NATURE WALKS

Experience a range of natural wonders in the company of your experienced professional guide on a nature walk. Learn how to track, seeing how close you can come to smaller game like impala or zebra without them being aware of your presence. Each bush walk is accompanied by an expertly trained and qualified guide, who follows strict protocols to ensure your safety and comfort.

# 3

### LOCAL COMMUNITY VISIT

Join a representative from the Africa Foundation for an afternoon, and gain first-hand knowledge of the various foundation projects, aimed at improving education, healthcare and access to water, as well as the development of local businesses in the area. You will have the opportunity to visit projects in the Huntingdon and Justicia communities, such as the Happy Homes Preschool or nearby Madilika Craft Centre.

# 4

### WELLNESS TREATMENTS

After a safari-filled day indulge in the pleasures of a Healing Earth wellness treatment either in your room, or in our massage sala. Beyond has partnered with Healing Earth, a leading natural, eco-friendly and holistic spa and skincare company, to produce a truly authentic African spa experience for the mind, body and soul.

# 5

### FAMILY SAFARI

Beyond Kirkman's Kamp offers a host of entertaining activities for children aged 3–12 years, bringing alive the magic of Africa. Whilst on a family safari, you can rest assured that your children will always be safe and well cared for (both on and off game drives). Every minute is supervised by our guides and lodge staff, who provide hours of entertainment and invaluable information to the children in their care.



## DISCOVER THE SABI SAND GAME RESERVE

Adventures of a lifetime

# Specialist safaris and trips

When booking a private vehicle and specialist guide, our safaris can be tailor-made to suit a wide range of interests.



1

### PHOTOGRAPHIC SAFARI

Our expert photographic guides will use their extensive experience in wildlife, birding and landscape photography to help you get the shot of a lifetime by providing advice on shutter speed, lenses, filters, angles, lighting and so much more. Combining their understanding of animal behaviour with their photography skills, they will help you plan every step of your safari.

2

### WEDDINGS

From a classic safari wedding in the open bush to a sunset ceremony overlooking a spectacular view or a walk down the aisle in the dry bed of an African river, our meticulous wedding planners can put together a wedding filled with breathtaking moments and joyful surprises that will pamper and delight any couple.

3

### PRIVATE GAME DRIVES

A private safari allows you to explore the concession at your own pace while focusing on your special interests. With your own dedicated ranger and tracker team, in your own private 4x4 safari vehicle, &Beyond's exclusive safaris let you create your very own tailor-made wildlife adventure.

4

### BIRDING SAFARIS

Birding Safaris are just one of &Beyond's many matchless private safaris that can be personalised for any small group. Accompanied by one of &Beyond's specialist birding guides, set out in search of over 300 bird species that inhabit the Sabi Sand, notable ones including the bateleur, black-bellied bustard and comb duck.

5

### SPECIALIST WALKING SAFARI

Dependant on the availability of a specialist guide, your ranger and tracker will tailor your walking experience to suit your personal requirements and preferences. Whether it be to follow a specific animal, unravelling the details of its daily life, or to spend the whole day exploring, a Specialist Walking Safari offers the opportunity to experience Africa at its wildest and most personal.

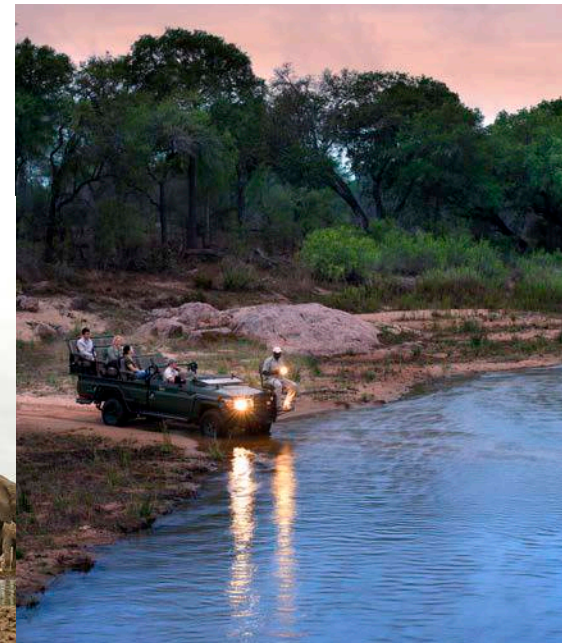
## DISCOVER THE SABI SAND GAME RESERVE

Adventures of a lifetime

# Year-round activities

- ✓ Game viewing
- ✓ Night drives
- ✓ Boma dinners\*
- ✓ Big Five sightings
- ✓ Birding
- ✓ Sundowners
- ✓ Bush dining\*
- ✓ Family safari\*
- ✓ Private game drives\*
- ✓ Birding safaris\*
- ✓ Nature walks\*
- ✓ Specialist walking safaris\*
- ✓ Local community visit
- ✓ Weddings
- ✓ Healing Earth wellness treatments
- ✓ Safari shopping

\* Rain dependant



**In terms of game viewing - dreams came true and we got stunning sightings of all the Big Five and mostly importantly the elusive leopard. ”**



DISCOVER THE SABI SAND GAME RESERVE

Adventures of a lifetime

# Timing is everything

	JAN	FEB	MAR	APR	MAY	JUN	JUL	AUG	SEP	OCT	NOV	DEC
The ideal time for a tracking or walking safari is during winter when it's cooler in the middle of the day					✓	✓	✓	✓	✓			
Summer is the best time for a photographic safari as landscapes are greener and watering holes fuller	✓	✓	✓						✓	✓	✓	✓
Although offered year-round, night drives are ideal during the summer months when evenings are warmer	✓	✓	✓	✓					✓	✓	✓	✓
The ideal time to view baby animals in the bush is during summer, usually at the start of the rainy season	✓	✓									✓	✓
Best game viewing, as animals gather around waterholes and are easier to spot in the thinned-out bush					✓	✓	✓	✓	✓	✓		
Year round birding, but if you want to see lots of birds then summer is best when the migrant birds return	✓	✓	✓							✓	✓	✓



## IMPACT INITIATIVES

By staying with us at either &Beyond Kirkman's Kamp or Tengile River Lodge, you are indirectly contributing to various **conservation initiatives** across the Sabi Sand Game Reserve.

**Anti-poaching missions** and general **wildlife management** require ongoing financial and physical aid from the team, as do more specific projects, such as The Southern Ground Hornbill Monitoring and Support Programme, and The Leopard Conservation Project, which, in partnership with Panthera, requires active research, monitoring and identifying of leopards by our guides on a daily basis.

Along with **Africa Foundation**, &Beyond also works closely with the neighbouring communities of Lilydale, Huntington, and Justicia, employing locally and investing heavily in community education, healthcare and small business development.

**Sustainability practices** remain a daily priority at all &Beyond lodges, and includes initiatives to eliminate all plastic bottles, as well as a continuous focus on energy-saving, water conservation, and fuel and waste reduction programs.

For more information, visit [www.andbeyond.com/impact](http://www.andbeyond.com/impact)



8 BEYOND KIRKMAN'S KAMP

# Kirkman's cottages

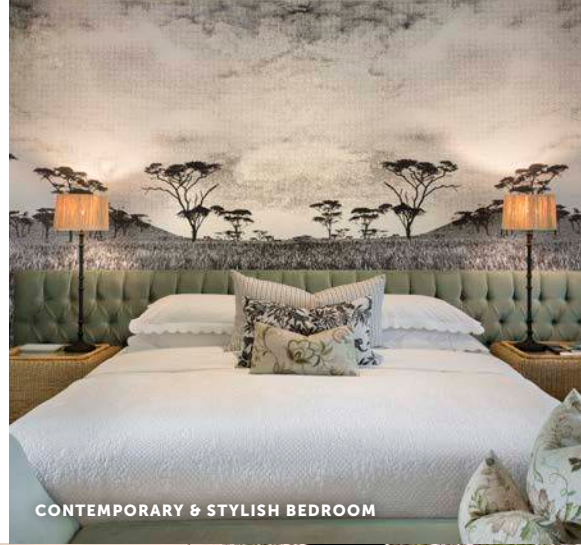




DISCOVER THE SABI SAND GAME RESERVE  
&Beyond Kirkman's Kamp accommodation

# Old world charm

&Beyond Kirkman's Kamp boasts 12 intimate cottages, each with glorious views overlooking the Sand River. Each cottage consists of one bedroom with an en-suite bathroom and private deck.



CONTEMPORARY & STYLISH BEDROOM



OUTDOOR SEATING WITH A VIEW

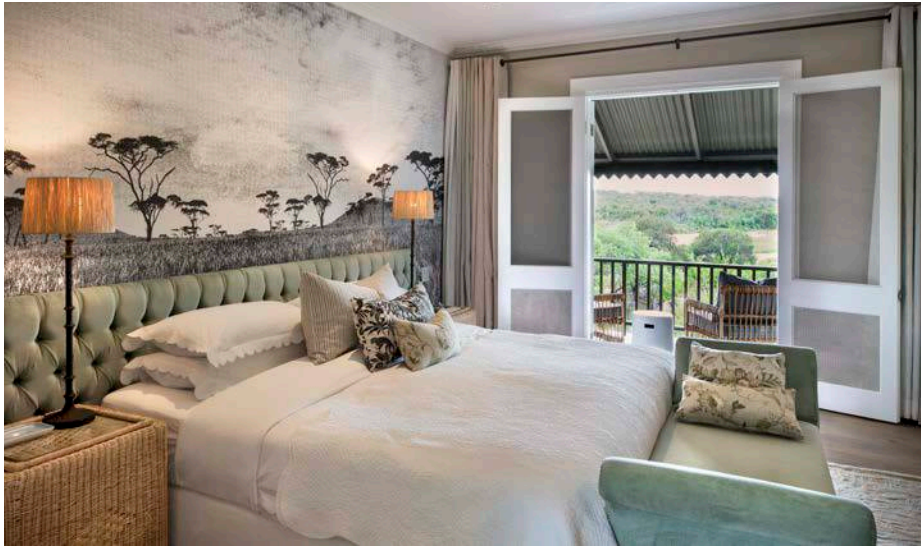


1920' GLAM BATHROOM

DISCOVER THE SABI SAND GAME RESERVE  
&Beyond Kirkman's Kamp accommodation

# COTTAGE

12 cottages / Maximum 25 guests



### SPECTACULAR VIEWS

The 12 air-conditioned guest cottages on &Beyond Kirkman's Kamp are reminiscent of an old farmstead, and each faces the glorious Sand River where elephants and other wild animals roam. The cosy rooms each have an ensuite bathroom with a shower, and a private verandah with magnificent views. There is only one triple-bed room available for small families.

### ROOM FACILITIES

Room sizes (Square meters)	Approx. 34m <sup>2</sup>
Private veranda	Yes
Private plunge pool	No
Personal bar	Yes
Personal coffee station	Yes
Air conditioning / heating	Yes
Overhead fans	Yes
Mosquito nets	No (sealed room)
Bath	No
Shower	Yes, Indoor shower only
Seperate W.C	Yes
Telephone	Yes
Hairdryer	Yes
Internet access	Yes
In-room safe	Yes
Plug type	220V AC Plug Type C, D, M, N Adapters available
Triple bed option	1 triple room only
Twin bed option	Yes
Double bed option	Yes
Accessibility	Not suitable for those with mobility issues



Typical cottage layout





andBEYOND



@andbeyondtravel  
#seewhatliesbeyond

andBeyond.com

GENERAL ENQUIRIES  
+27 11 809 4300  
[contactus@andBeyond.com](mailto:contactus@andBeyond.com)

REGIONAL ENQUIRIES  
[africa.reservations@andBeyond.com](mailto:africa.reservations@andBeyond.com)  
[southasia.reservations@andBeyond.com](mailto:southasia.reservations@andBeyond.com)  
[southamerica.reservations@andBeyond.com](mailto:southamerica.reservations@andBeyond.com)

PRESS ENQUIRIES  
[media@andBeyond.com](mailto:media@andBeyond.com)

TRAVEL TRADE  
[enquiry@andBeyond.com](mailto:enquiry@andBeyond.com)